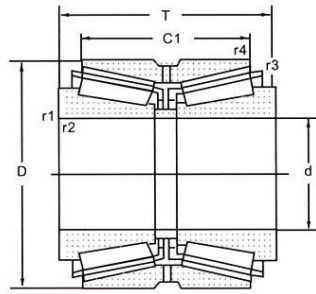


双列圆锥滚子轴承 (英制)



| № подшипника. | Граничные размеры (мм) | | | | | | Базовая грузоподъемность (кН) | | Размеры абатмента и галтели (мм) | | | | | | Value | | | Вес (кг) |
|----------------------|------------------------|---------|---------|---------|---------------------|---------------------|-------------------------------|------|----------------------------------|--------|--------|--------------------|-----|------|-------|-----|-----------|----------|
| | д: | Д: | Т | С | Р _{1,2мин} | Р _{3,4мин} | Кр | Кор | Дизайн | | | ра _{Макс} | e | Y1 | Y2 | Y0 | Ссылаться | |
| | | | | | | | | | Дамин | Дамакс | РБмакс | | | | | | | |
| 783/774D | 100 | 180.975 | 104.775 | 85.725 | 1.6 | 3.6 | 440 | 750 | 1 | 123 | 171 | 1.6 | 3.6 | 0.39 | 1.8 | 2.6 | 1.7 | 10.6 |
| 52400/52637D | 101.6 | 161.925 | 82.548 | 61.912 | 0.8 | 3.6 | 310 | 570 | 1 | 120 | 155 | 0.8 | 3.6 | 0.47 | 1.4 | 2.1 | 1.4 | 5.7 |
| 687/672D | 101.6 | 168.275 | 92.075 | 69.85 | 0.8 | 3.6 | 380 | 685 | 1 | 121 | 161 | 0.8 | 3.6 | 0.47 | 1.4 | 2.1 | 1.4 | 7.3 |
| 780/773D | 101.6 | 180 | 104.775 | 85.725 | 0.8 | 3.6 | 440 | 750 | 1 | 124 | 171 | 0.8 | 3.6 | 0.39 | 1.8 | 2.6 | 1.7 | 10.2 |
| 780/774D | 101.6 | 180.975 | 104.775 | 85.725 | 1.6 | 3.6 | 440 | 750 | 1 | 124 | 171 | 1.6 | 3.6 | 0.39 | 1.8 | 2.6 | 1.7 | 10.4 |
| 861/854D | 101.6 | 190.5 | 127 | 101.6 | 1.6 | 8 | 605 | 1000 | 1 | 130 | 180 | 1.6 | 8 | 0.33 | 2 | 3 | 2 | 14.4 |
| HH221449/HH221410D | 101.6 | 190.5 | 127 | 104.775 | 1.6 | 8 | 665 | 1040 | 1 | 131 | 183 | 1.6 | 8 | 0.33 | 2 | 3 | 2 | 14.3 |
| 98400/98789D | 101.6 | 200.025 | 115.888 | 80.216 | 2.3 | 3.6 | 540 | 850 | 1 | 132 | 190 | 2.3 | 3.6 | 0.63 | 1.1 | 1.6 | 1 | 14.8 |
| HH224335/HH224310D | 101.6 | 212.725 | 142.875 | 117.475 | 1.6 | 7 | 975 | 1620 | 1 | 137 | 205 | 1.6 | 7 | 0.33 | 2.1 | 3.1 | 2 | 23.3 |
| 782/773D | 104.775 | 180 | 104.775 | 85.725 | 0.8 | 3.6 | 440 | 750 | 1 | 125 | 171 | 0.8 | 3.6 | 0.39 | 1.8 | 2.6 | 1.7 | 9.7 |
| 786/774D | 104.775 | 180.975 | 104.775 | 85.725 | 1.6 | 6.4 | 440 | 750 | 1 | 128 | 171 | 1.6 | 6.4 | 0.39 | 1.8 | 2.6 | 1.7 | 9.9 |
| 71412/71751D | 104.775 | 190.5 | 106.632 | 80.962 | 1.6 | 3.6 | 510 | 925 | 1 | 131 | 182 | 1.6 | 3.6 | 0.42 | 1.6 | 2.4 | 1.6 | 12.2 |
| 56418/56650D | 106.362 | 165.1 | 82.55 | 63.5 | 0.8 | 3.6 | 335 | 645 | 1 | 126 | 160 | 0.8 | 3.6 | 0.5 | 1.4 | 2 | 1.3 | 5.9 |
| L521949/L521910D | 107.95 | 146.05 | 49.212 | 39.688 | 0.8 | 1.5 | 147 | 330 | 1 | 120 | 141 | 0.8 | 1.5 | 0.39 | 1.7 | 2.6 | 1.7 | 2.2 |
| 56425/56650D | 107.95 | 165.1 | 82.55 | 63.5 | 0.8 | 3.6 | 335 | 645 | 1 | 127 | 160 | 0.8 | 3.6 | 0.5 | 1.4 | 2 | 1.3 | 5.7 |
| 71425/71751D | 107.95 | 190.5 | 106.362 | 80.962 | 1.6 | 3.6 | 510 | 925 | 1 | 133 | 182 | 1.6 | 3.6 | 0.42 | 1.6 | 2.4 | 1.6 | 11.8 |
| HH224340/HH224310D | 107.95 | 212.725 | 142.875 | 117.475 | 1.6 | 8 | 975 | 1620 | 1 | 142 | 205 | 1.6 | 8 | 0.33 | 2.1 | 3.1 | 2 | 22.1 |
| EE342043/342091D | 107.95 | 234.95 | 111.125 | 82.55 | 1.6 | 6.4 | 610 | 840 | 1 | 144 | 222 | 1.6 | 6.4 | 0.43 | 1.6 | 2.3 | 1.5 | 20 |
| 71432/71751D | 109.952 | 190.5 | 106.362 | 80.962 | 1.6 | 3.6 | 510 | 925 | 1 | 134 | 182 | 1.6 | 3.6 | 0.42 | 1.6 | 2.4 | 1.6 | 11.5 |
| 64433/64700D | 109.952 | 177.8 | 92.075 | 69.85 | 0.8 | 3.6 | 400 | 750 | 1 | 132 | 173 | 0.8 | 3.6 | 0.52 | 1.3 | 1.9 | 1.3 | 8 |
| 71437/71751D | 111.125 | 190.5 | 106.362 | 80.962 | 1.6 | 3.6 | 510 | 925 | 1 | 135 | 182 | 1.6 | 3.6 | 0.42 | 1.6 | 2.4 | 1.6 | 11.3 |
| 64450/64700D | 114.3 | 177.8 | 92.075 | 69.85 | 0.8 | 3.6 | 444 | 788 | 1 | 135 | 173 | 0.8 | 3.6 | 0.52 | 1.3 | 1.9 | 1.3 | 7.75 |
| HH224346/HH224310D | 114.3 | 212.725 | 142.875 | 117.475 | 1.6 | 7 | 975 | 1620 | 1 | 144 | 205 | 1.6 | 7 | 0.33 | 2.1 | 3.1 | 2 | 20.9 |
| HH224346NA/HH224310D | 114.3 | 212.725 | 142.875 | 117.475 | 1.6 | 3.6 | 975 | 1620 | 2 | 140 | 205 | 1.6 | 3.6 | 0.33 | 2.1 | 3.1 | 2 | 21 |
| HM926740/HM926710D | 114.3 | 228.6 | 115.888 | 84.138 | 2.3 | 3.6 | 645 | 1060 | 1 | 152 | 220 | 2.3 | 3.6 | 0.74 | 0.92 | 1.4 | 0.9 | 20.5 |
| HH224349/HH224310D | 114.976 | 212.725 | 142.875 | 117.475 | 1.6 | 7 | 975 | 1620 | 1 | 144 | 205 | 1.6 | 7 | 0.33 | 2.1 | 3.1 | 2 | 20.8 |
| M224748/M224710D | 120 | 174.625 | 77.788 | 61.913 | 0.8 | 3.6 | 365 | 765 | 1 | 137 | 169 | 0.8 | 3.6 | 0.33 | 2 | 3 | 2 | 5.8 |
| M224749/M224710D | 120.65 | 174.625 | 77.788 | 61.913 | 0.8 | 3.6 | 365 | 765 | 1 | 138 | 169 | 0.8 | 3.6 | 0.33 | 2 | 3 | 2 | 5.7 |
| 795/792D | 120.65 | 206.375 | 107.95 | 82.55 | 0.8 | 3.2 | 545 | 1060 | 1 | 149 | 199 | 0.8 | 3.2 | 0.46 | 1.5 | 2.2 | 1.4 | 14 |
| 48286/48220D | 123.825 | 182.562 | 85.725 | 73.025 | 0.8 | 3.6 | 390 | 885 | 1 | 143 | 177 | 0.8 | 3.6 | 0.31 | 2.2 | 3.3 | 2.2 | 7.4 |